



**[BerksNature.org](http://BerksNature.org)**

We believe nature is essential to our quality of life. *As demonstrated by...*

- Land Management & Use
- Protection of our Water
- Connecting People to Nature
- Urban Greening
- Environmental Education



# Berks Nature offices on North 11<sup>th</sup> Street Reading

- Non-Profit
- Staff of 5



LAND

# Land Protection

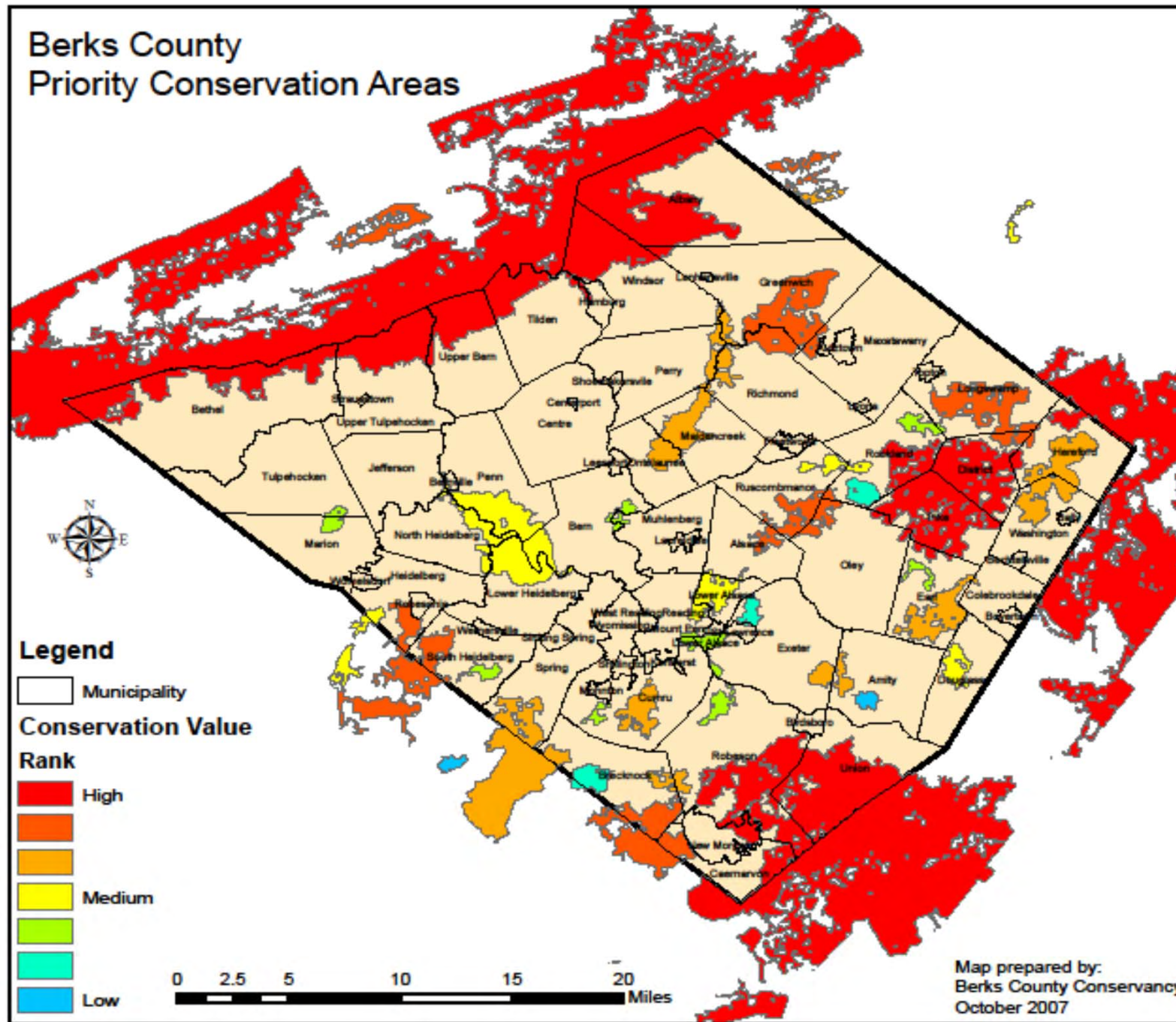


- Conservation Easements
- Nature Preserves
- Trail Easements

# Land Management



# Berks County Priority Conservation Areas



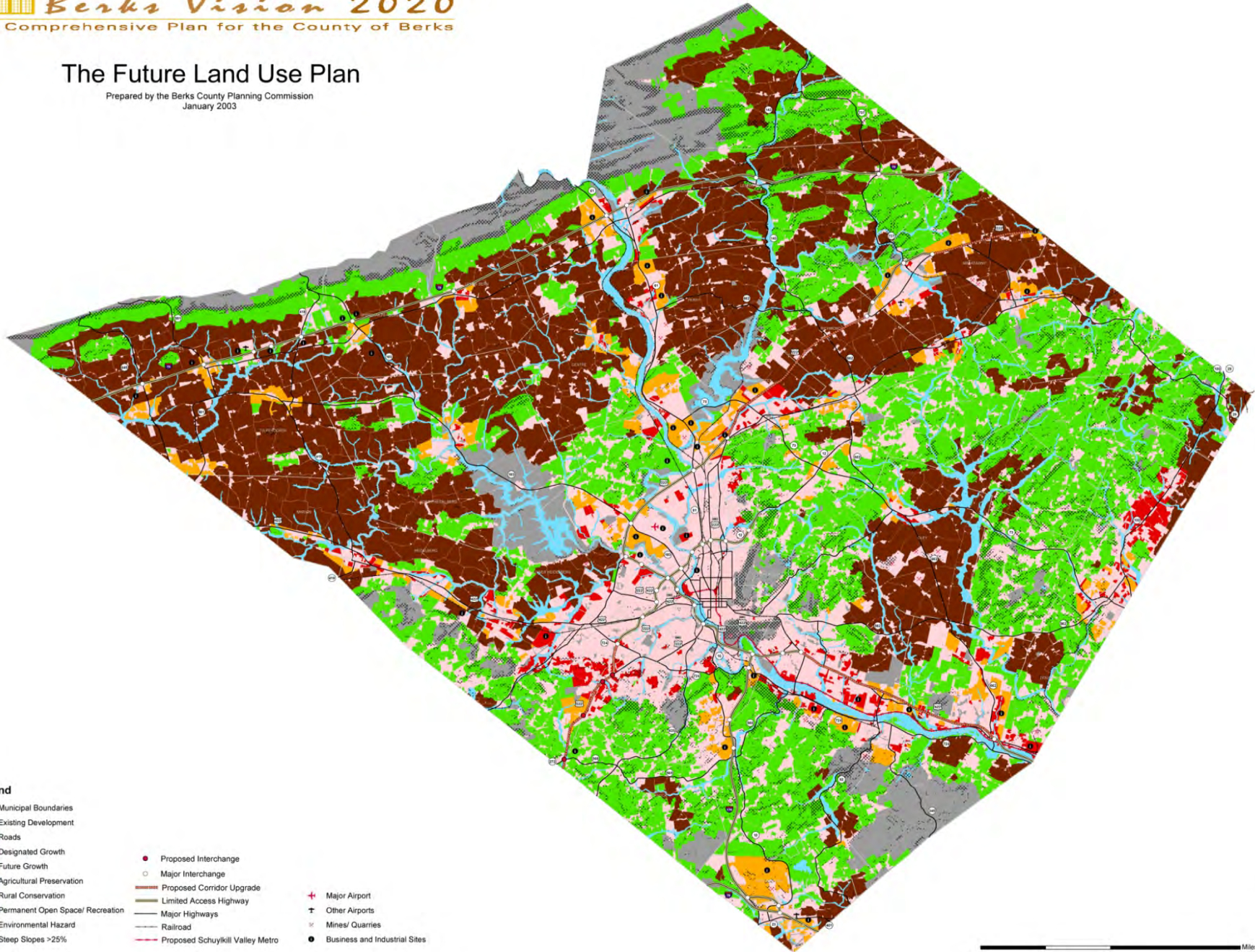


# Berks Vision 2020

A Comprehensive Plan for the County of Berks

## The Future Land Use Plan

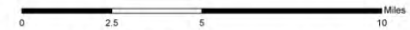
Prepared by the Berks County Planning Commission  
January 2003



### Legend

- |                                  |                                  |                               |
|----------------------------------|----------------------------------|-------------------------------|
| Municipal Boundaries             | Proposed Interchange             | Major Airport                 |
| Existing Development             | Major Interchange                | Other Airports                |
| Roads                            | Proposed Corridor Upgrade        | Mines/ Quarries               |
| Designated Growth                | Limited Access Highway           | Business and Industrial Sites |
| Future Growth                    | Major Highways                   |                               |
| Agricultural Preservation        | Railroad                         |                               |
| Rural Conservation               | Proposed Schuylkill Valley Metro |                               |
| Permanent Open Space/ Recreation |                                  |                               |
| Environmental Hazard             |                                  |                               |
| Steep Slopes >25%                |                                  |                               |

This data is provided for reference purposes only and should not be used for engineering purposes.  
Berks County assumes no liability for any inaccuracies or omissions in this digital data.



PA State Plane South, NAD 1927

1:80,000





**WATER**

We preserve the quality of your drinking water.



Streams are impaired from erosion.



# Barriers protecting streams



# Fencing to protect streams



# Angelica Creek BEFORE



# Angelica Creek DURING



# Angelica Creek AFTER







TRAILS

# Neversink Mountain Preserve



# Earl Poole Sanctuary

- Managed for wildlife
- Secluded
- Includes trails and picnic areas
- Perfect for family walks, birdwatching, enjoying nature



# Angelica Greenway & Trail



- Ken-Grill Pool thru Angelica Park to the City!
- Alvernia, Angelica Park
- Perfect for bikes, running, walks, education

## Gravity Trail — *Antietam Lake to Pendora Park*

- Provides access to the county's 560-acre Antietam Lake property from the city/Mt. Penn area
- Users could use this trail connection to go from Antietam Lake to the 900-acre Neversink Preserve



# URBAN GREENING



Eisenbrown Street  
Community Garden

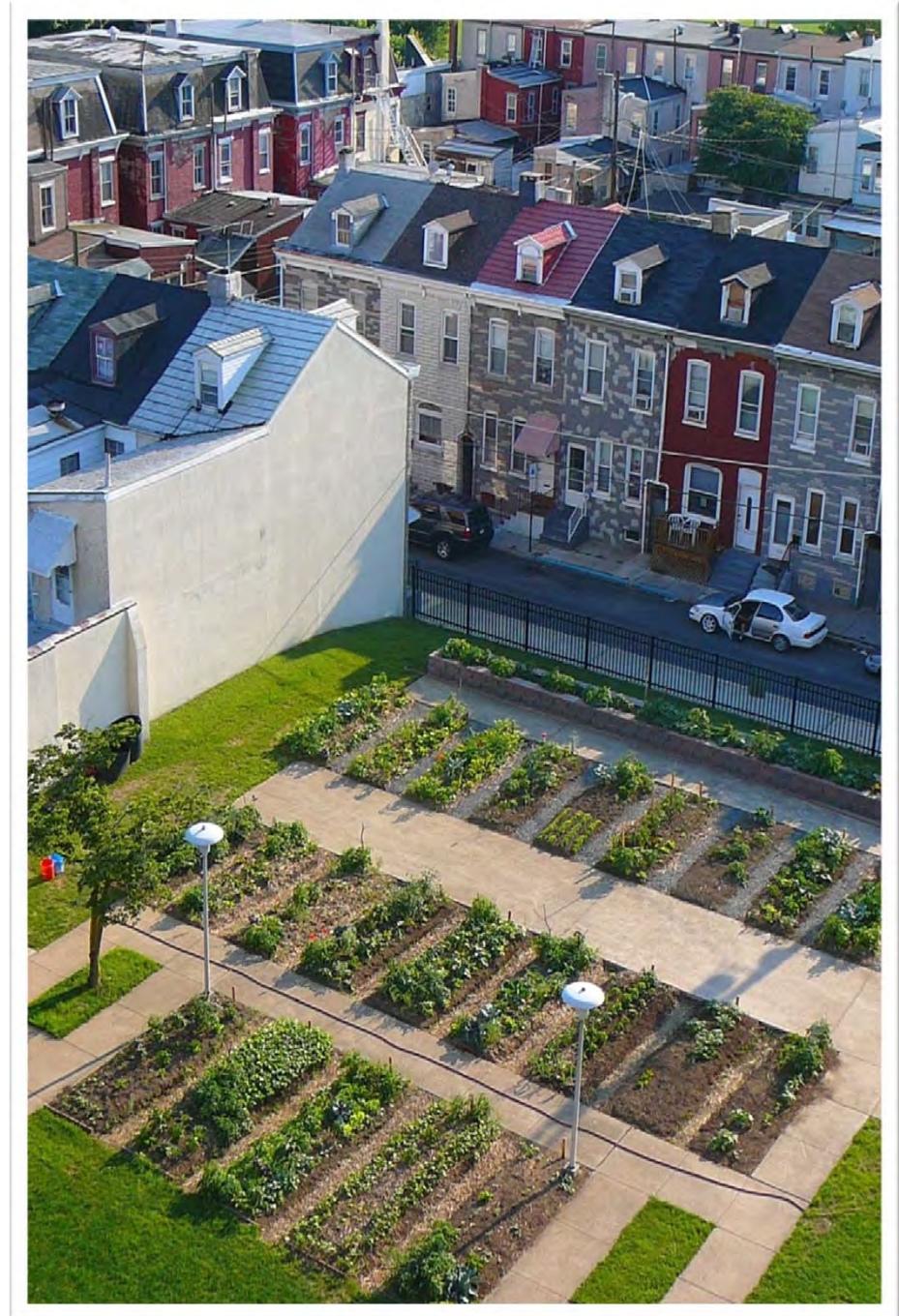




# Berks Urban Greening (BUG) Community Gardening Program



Kennedy Towers  
Community Garden  
S. 4<sup>th</sup> Street,  
Reading



EDUCATION

CONSERVANCY  
**ECO-ADVENTURE**  
**CAMP**  
EXPLORE YOUR WORLD





STATE  OF THE  
**ENVIRONMENT**

---

• BERKS COUNTY, PA •



AIR



LAND



WATER



WASTE



ENERGY





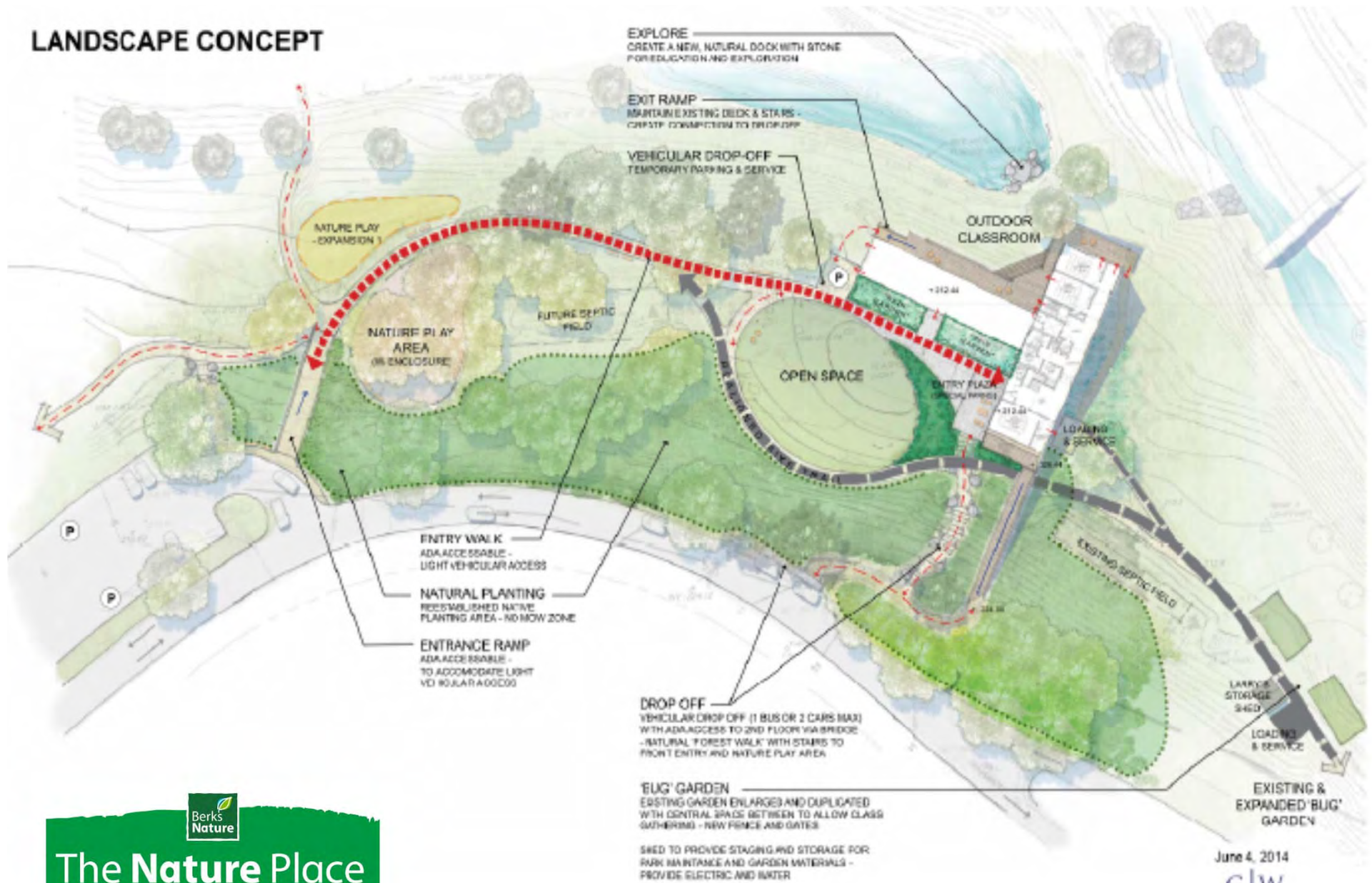
What's in our near future?



A young child with light brown hair is shown in profile, blowing on a dandelion seed head. The child's eyes are closed, and their lips are pursed together. The background is a soft-focus outdoor scene with green foliage and bright sunlight, creating a bokeh effect of light spots. The overall mood is peaceful and natural.

*Spread the Seeds of Conservation  
Capital Campaign*

# LANDSCAPE CONCEPT



**EXPLORE**  
CREATE A NEW, NATURAL DOCK WITH STONE  
FOR EDUCATION AND EXPLORATION

**EXIT RAMP**  
MAINTAIN EXISTING DECK & STAIRS -  
COMPLETE CONNECTION TO BRIDGE

**VEHICULAR DROP-OFF**  
TEMPORARY PARKING & SERVICE

**OUTDOOR  
CLASSROOM**

**NATURE PLAY  
- EXPANSION 1**

**NATURE PLAY  
AREA  
(IN ENCLOSURE)**

**FUTURE SEPTIC  
FIELD**

**OPEN SPACE**

**ENTRY PLAZA  
(SPECIAL PAVED)**

**LOADING  
& SERVICE**

**ENTRY WALK**  
ADA ACCESSIBLE -  
LIGHT VEHICULAR ACCESS

**NATURAL PLANTING**  
REESTABLISHED NATIVE  
PLANTING AREA - NO MOW ZONE

**ENTRANCE RAMP**  
ADA ACCESSIBLE -  
TO ACCOMMODATE LIGHT  
VEHICULAR ACCESS

**EXISTING SEPTIC FIELD**

**DROP OFF**  
VEHICULAR DROP OFF (1 BUS OR 2 CARS MAX)  
WITH ADA ACCESS TO 2ND FLOOR VIA BRIDGE  
- NATURAL FOREST WALK WITH STAIRS TO  
FRONT ENTRY AND NATURE PLAY AREA

**LARGE  
STORAGE  
SHED**

**LOADING  
& SERVICE**

**'BUG' GARDEN**  
EXISTING GARDEN ENLARGED AND DUPLICATED  
WITH CENTRAL SPACE BETWEEN TO ALLOW CLASS  
GATHERING - NEW FENCE AND GATES

**EXISTING &  
EXPANDED 'BUG'  
GARDEN**

**SHED TO PROVIDE STAGING AND STORAGE FOR  
PARK MAINTENANCE AND GARDEN MATERIALS -  
PROVIDE ELECTRIC AND WATER**

June 4, 2014



**ENVIRONMENTAL EXPLORATION CENTER  
ANGELICA CREEK PARK**

**MAHAN RYKIEL**  
LANDSCAPE ARCHITECTURE  
URBAN DESIGN & PLANNING  
www.mahanrykiel.com 610.352.5007

ARCHITECTS





Questions? Discussion



[BerksNature.org](http://BerksNature.org)