

Modeling the Dispersal of Adult Stoneflies

James Knighton

Advisors: Jason Cruz (PWD), Sally Willig (Penn),
Tanya Dapkey (Penn)

1/28/2013



Philadelphia's waterways are highly urbanized

Presently, freshwater EPT macroinvertebrate indicators (Mayflies, Caddisflies and Stoneflies) are largely absent

Restoration projects by PWD aim to restore quality, habitat, etc. of streams

The presence or absence of pollution sensitive insects can be used to measure restoration success

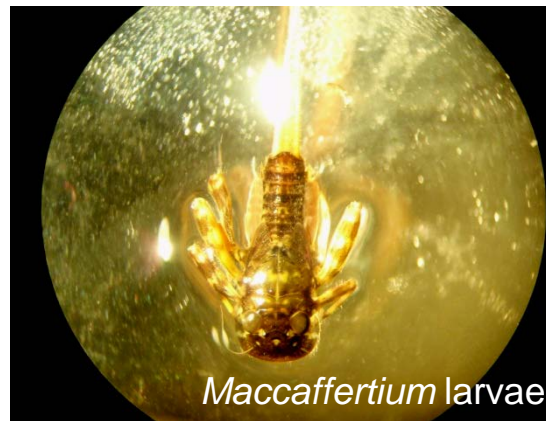
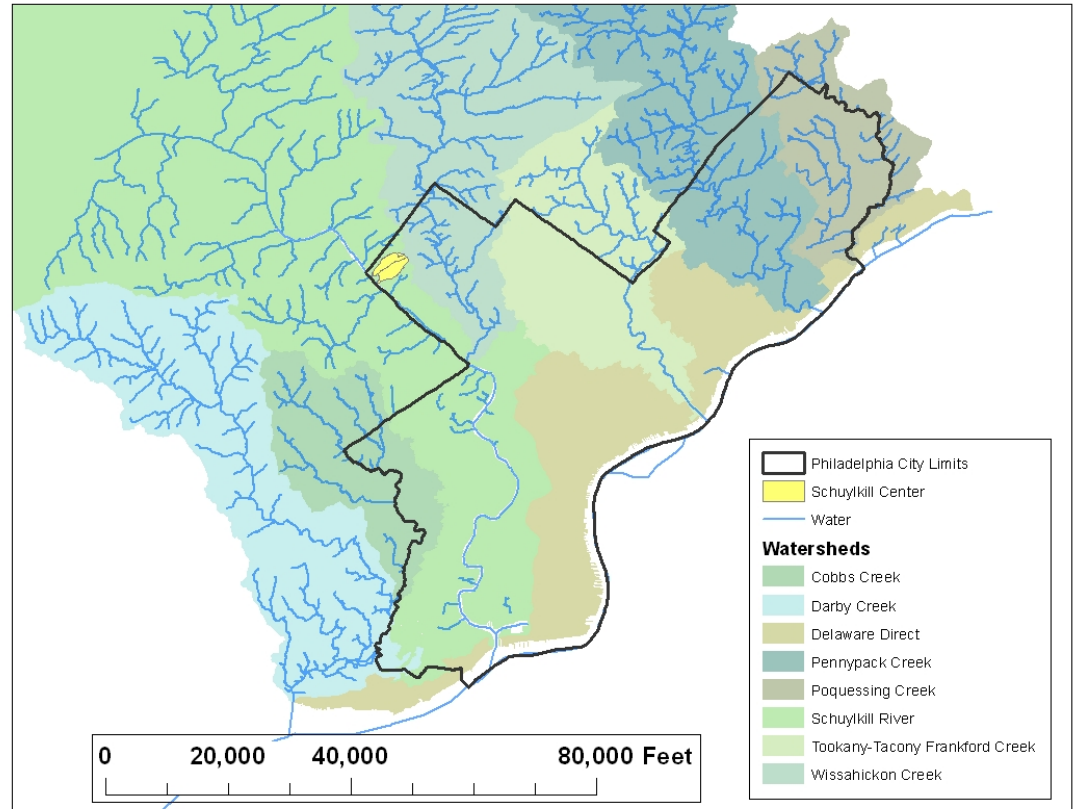


The Philadelphia stream network is greatly reduced, generally lacking headwater streams

The degree of habitat segmentation may prevent recolonization through passive downstream drift of aquatic larvae

Recolonization may depend on overland flight of adult macroinvertebrates

Can these freshwater indicator species be expected to recolonize Philadelphia?



Maccaffertium larvae



Maccaffertium adult

Primary Research Goals

- 1) Measure rates of overland dispersal through trapping adult EPT at Schuylkill Center for Environmental Education
- 2) Develop and calibrate a predictive model for adult EPT dispersal
- 3) Estimate probability of EPT recolonization to guide post restoration monitoring programs

Schuylkill Center for Environmental Education

- 6 sticky traps (2 ft by 2 ft) installed laterally from Meig's Run to trap flying EPT adults
- Specimens collected every two weeks for a period of 10 months
- 712 EPT specimens collected; 13 taxa



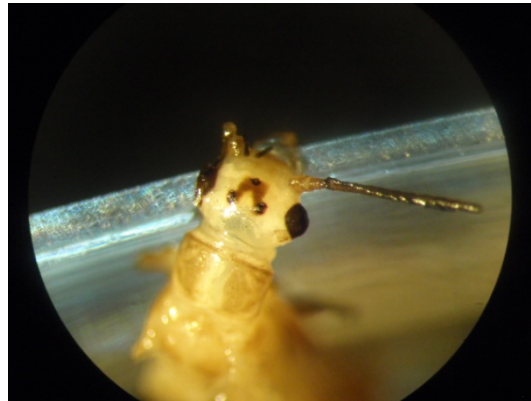
Caddisflies

Diplectrona modesta
Dolophilodes distincta
Neophylax mitchelli
Rhyacophila invaria



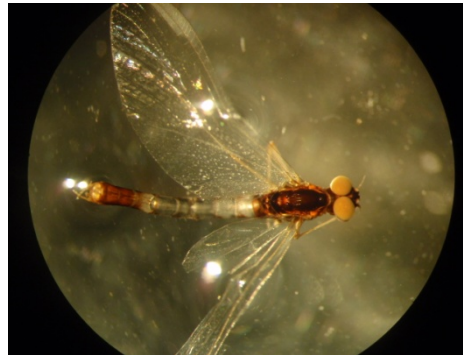
Stoneflies

Allocapnia recta
Amphinemura nigritta
Isoperla holochlora
Leuctra ferruginea
Leuctra variabilis
Prostioa similis



Mayflies

Maccafertium puticum
Paraleptophlebia debilis
Paraleptophlebia guttata

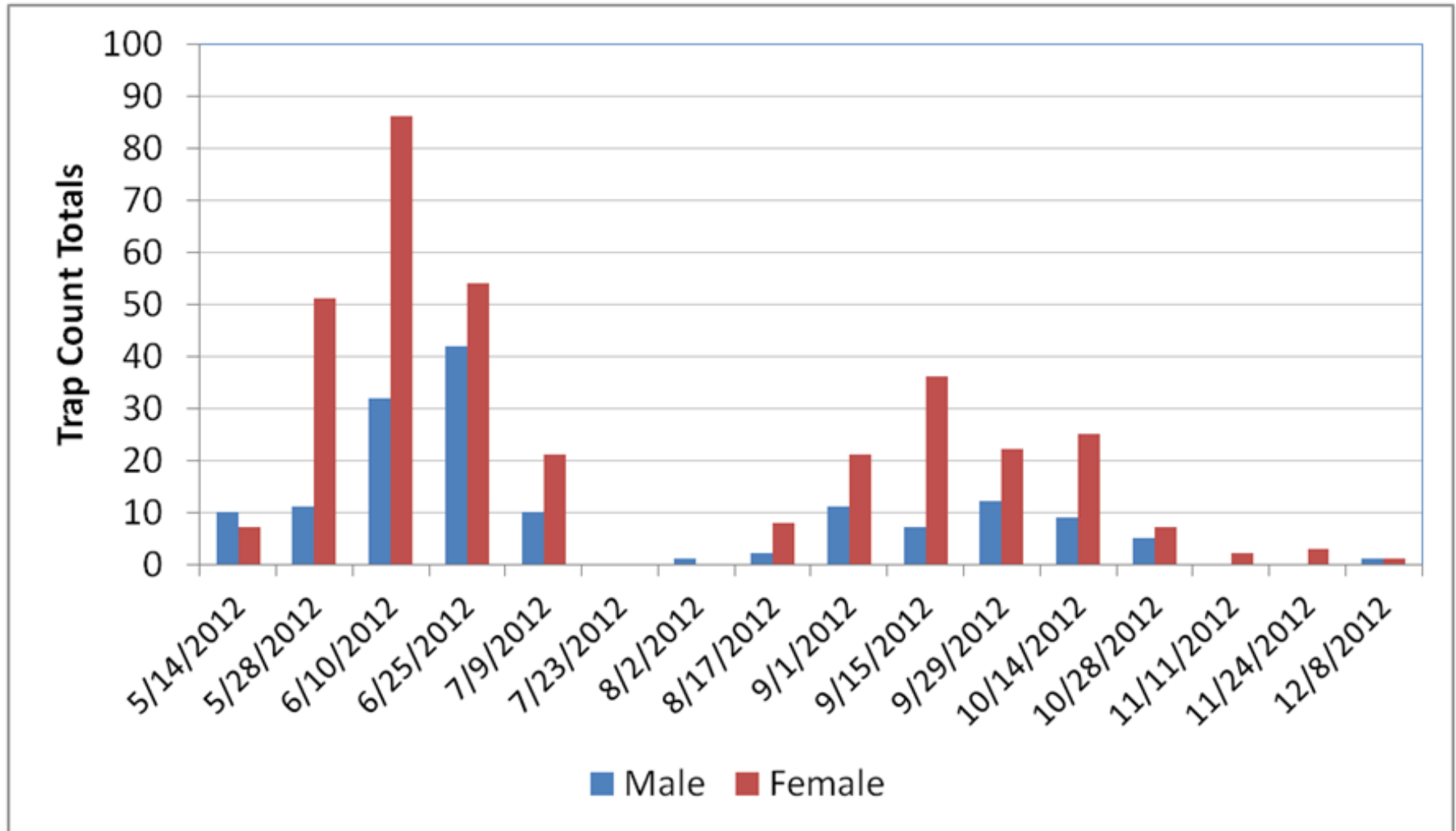




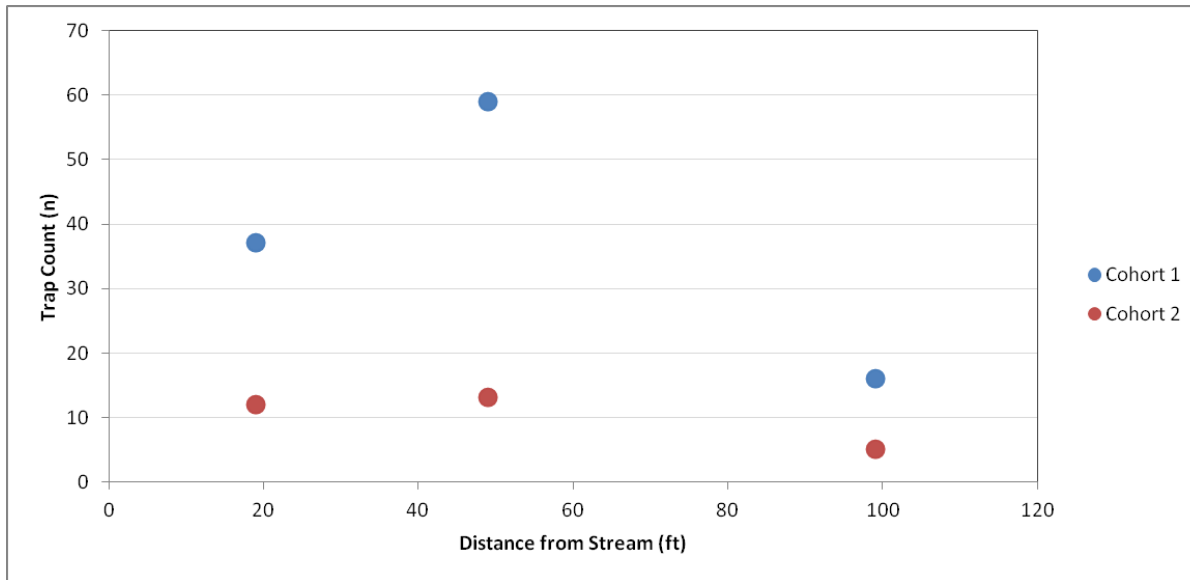
Leuctra ferruginea

- Most abundant, 512 specimens collected
- Univoltine life cycle, two distinct cohorts
- Strong lateral dispersal observed
- Selected as study specimen to model adult dispersal

Observed *L. Ferruginea* Emergence



Regression Against Distance from Stream

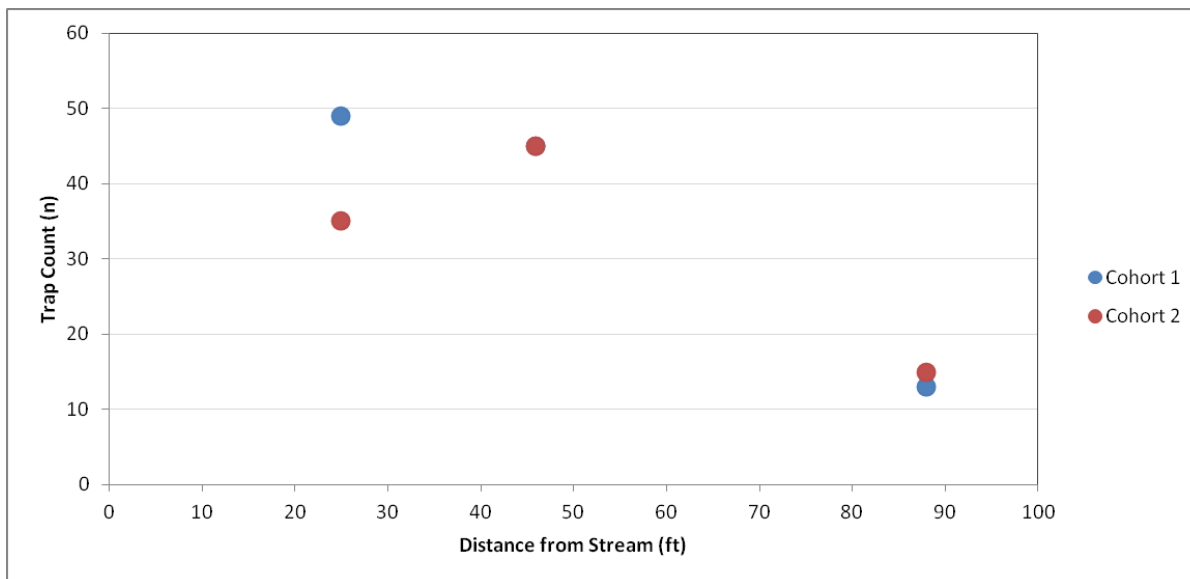


-A trend of decreasing *L. ferruginea* density from stream is observed at each location

-Regression analysis does little to explain further dispersal distances

- Trap counts cannot be considered independently measured quantities

- More sophisticated analysis will improve dispersal and recolonization estimates



Analysis of Field Obs; Review of Models

Models of Insect Flight in Existing Literature Reviewed

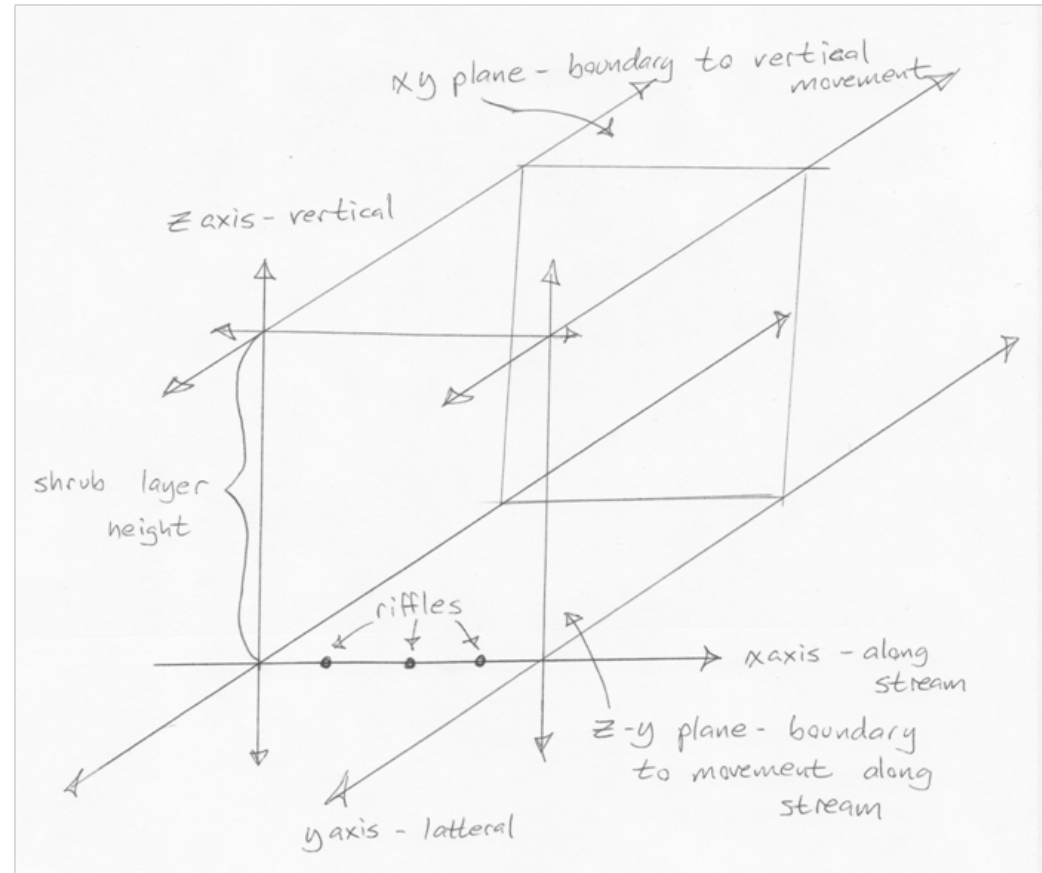
- Linear regressions (Petersen, 2009;
- Model relating number of insects to distance and time (Freeman 1977)
- ArcGIS based deterministic Cauchy diffusion model (Mayer, 1999)
- Individual Insect Based Random Walk Model (Petrovskii, 2011; Walters, 2006)

Random Walk Model chosen as starting point (Petrovskii et al, 2011)

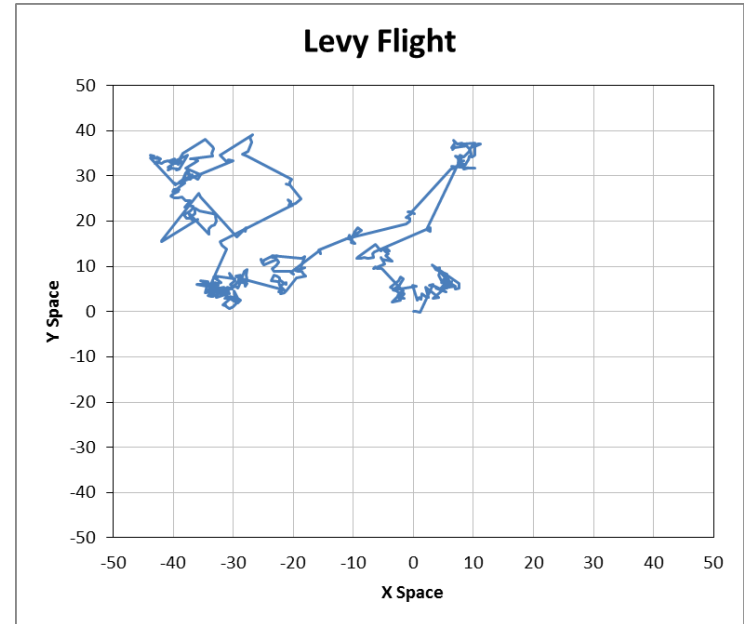
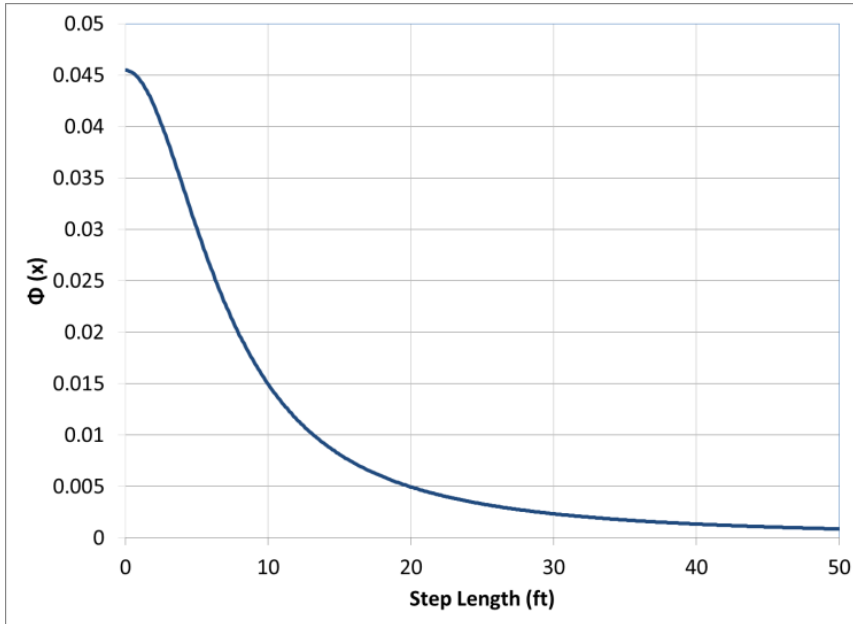
- Stochastic approach to modeling stonefly behavior
- Easily simulates the trapping of insects, allows for validation with field data
- Relies on estimates of individual behavior rather than broad estimates about population behavior
- Allows greatest flexibility for testing of ecological hypothesis
- Originally designed to model aphids, a crawling terrestrial insect

Proposed Modifications for Stonefly Dispersal

- Third dimension added to simulate flying insects
 - Reflective boundaries added to reduce computational demand
 - Solution technique rewritten; numerically identical to solution proposed by Petrovskii et al (2011)
- Various mechanisms for behavior tested against observed trap counts (brownian motion, levy flight, etc)

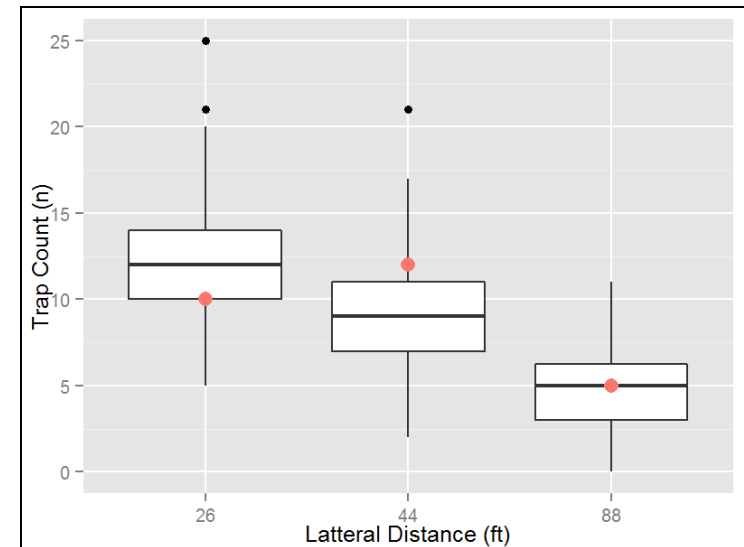


Levy Flight Random Walk Model

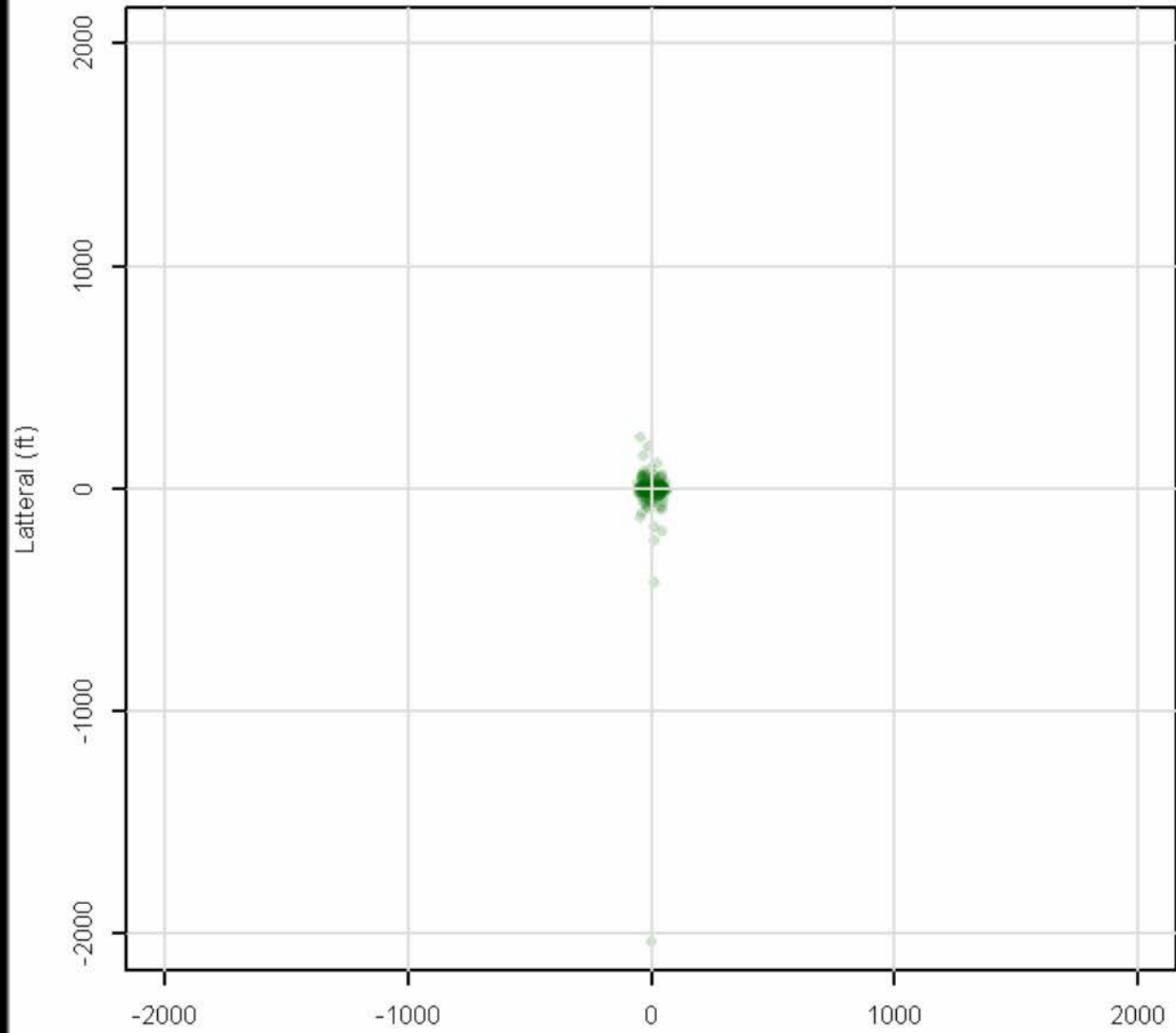


Levy Flight provides best match to field observations of all theoretical random walks evaluated

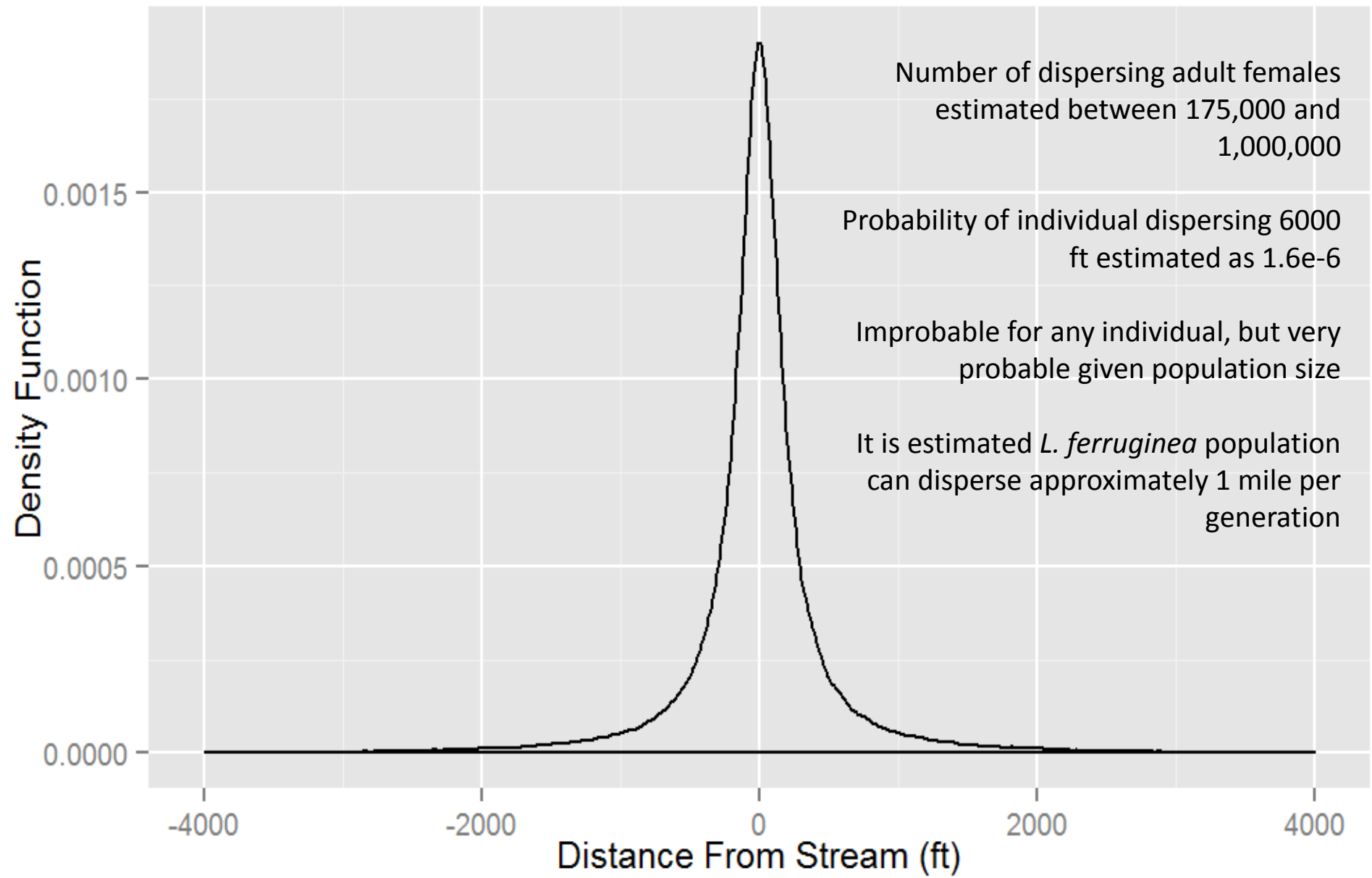
Levy Flight behavior suggests stonefly movement is a specialized trait to optimize search efficiency



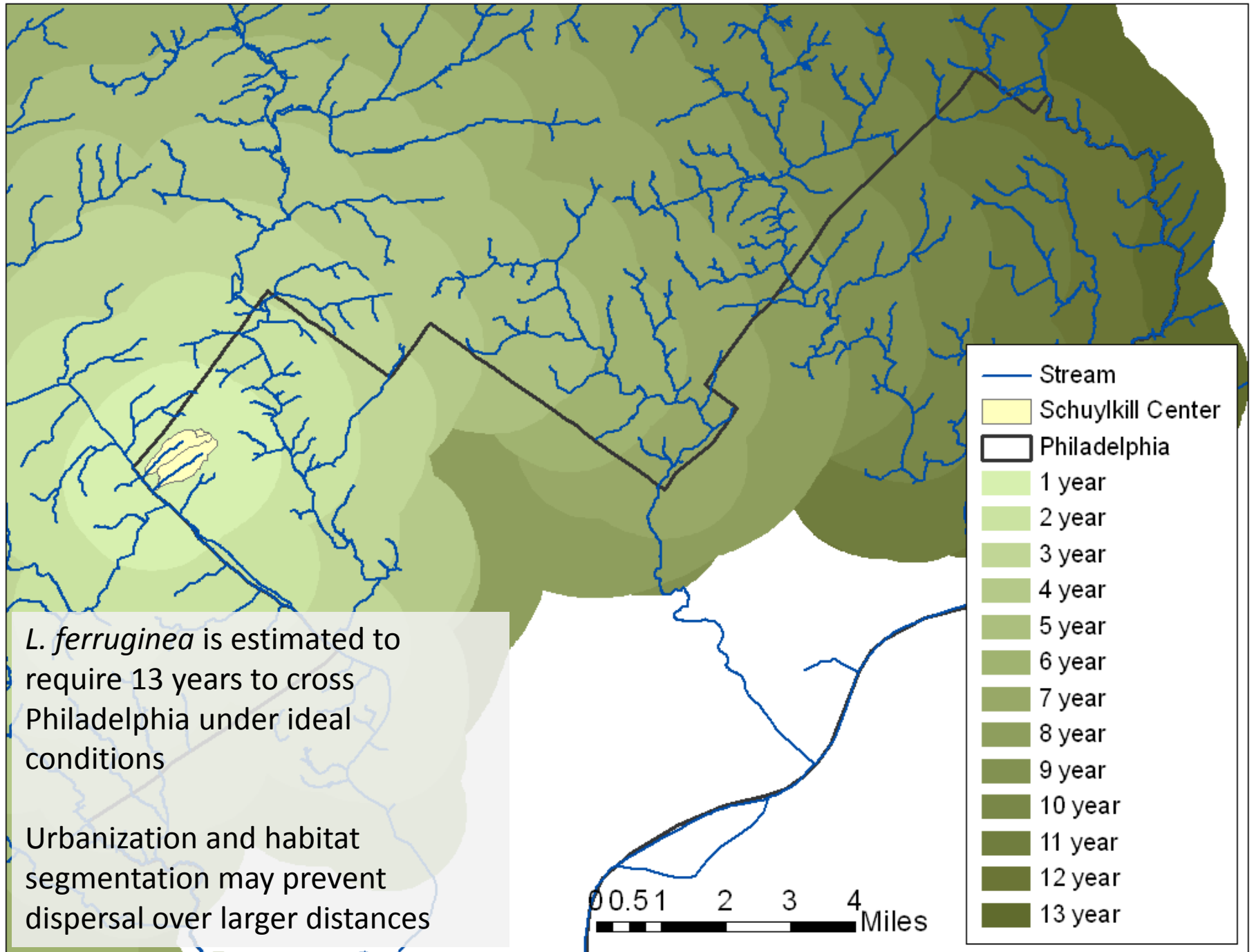
Levy Flight Dispersal - Location A



Time Step 1 Trap A: 0 Trap B: 0 Trap C: 0



Model derived estimate of lateral dispersal behavior of *L. ferruginea*



Conclusions

Individual insect based random walk simulations are useful in predicting the dispersal of adult EPT insects

Overland dispersal by adult *L. Ferruginea* may be a viable pathway for recolonization of restored waterways

“Field of dreams” hypothesis (Palmer et al, 1997) of stream restoration not always a safe assumption

EPA recommended 5 year post restoration monitoring program for wetlands may not be a valid restoration template within Philadelphia

Local conditions such as EPT population density and habitat segmentation must be considered when developing in stream biomonitoring programs

Acknowledgements

Philadelphia Water Department for funding for lab and field equipment

University of Pennsylvania for funding the DNA barcoding of 100 specimens for entry into the BOLD database

Schuylkill Center for Environmental Education and Joanne Donohue for preserving a high quality stream within Philadelphia and supporting this research

Dr. Dewalt (University of Illinois) , Dr. Funk (Stroud Water Research Center) and Dr. Gelhaus (Academy of Natural Sciences) for taxonomical advice

Ellen Maher, Anna Knighton, Nick Knighton, Ali Okur and Casey Thomas for assisting field work